

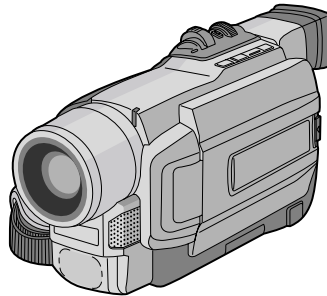
JVC

SCHEMATIC DIAGRAMS

DIGITAL VIDEO CAMERA

GR-DVL313KR,318KR

CD-ROM No.SML200110



Mini **DV** NTSC

Regarding service information other than these sections, refer to the GR-DVL310U service manual (No. 86602) and GR-DVL310U (Additional edition) service manual (No. 86602B). Also, be sure to note important safety precautions provided in the service manual.

SPECIFICATIONS *(The specifications shown pertain specifically to the model GR-DVL318KR,817KR)*

캠코더

일반사양

전원:	: DC 11.0V $\overline{\text{---}}$ (AC 전원 어댑터 사용) DC 7.2 V $\overline{\text{---}}$ (배터리 팩 사용)
소비전력:	LCD 모니터 OFF, 뷰파인더 ON : 약 4.3 W LCD 모니터 ON, 뷰파인더 OFF : 약 5.3 W 비디오 라이트 : 약 3.5 W
크기 (W x H x D)	: 83 mm x 97 mm x 188 mm (3-5/16" x 3-7/8" x 7-7/16") (LCD 모니터를 접고, 뷰파인더를 내린 상태에서)
무게	: 약 610 g (1.4 lbs) (GR-DVL817) 약 600 g (1.4 lbs) (GR-DVL318)
작동 온도	: 0°C ~ 40°C (화씨 32 ~ 104도)
작동 습도	: 35% ~ 80%
저장 온도	: -20°C ~ 50°C (화씨 -4 ~ 122도)
픽업	: 1/4" CCD
렌즈	: F 1.8, f = 3.6 mm ~ 36 mm, 10:1 파워 줌 렌즈
필터 직경	: ϕ 37 mm
LCD 모니터	: 3.5" 대각선 측정화면, LCD 패널/TFT active matrix system (GR-DVL817) 3" 대각선 측정화면, LCD 패널/TFT active matrix system (GR-DVL318)
뷰파인더	: 0.24" 흑백 LCD 전자식 뷰파인더
스피커	: 모노럴
디지털 비디오 카메라	
포맷	: DV 포맷 (SD 모드)
시그널 포맷	: NTSC 표준
녹화/재생 포맷	: 비디오: 디지털 콤포넌트 녹화 : 오디오: PCM 디지털 녹화, 32 kHz 4 채널 (12-bit), 48 kHz 2 채널 (16-bit)
카세트	: Mini DV 카세트
테이프 속도	: SP: 18.8 mm/s LP: 12.5 mm/s
최대 녹화 시간 (80분용 카세트 사용시)	: SP: 80 분 LP: 120 분

디지털 스틸 카메라 (GR-DVL817에 한함)

저장 매체	: SD 메모리 카드/MultiMedia 카드
압축저장 방식	: JPEG (compatible)
파일 크기	: VGA (640 x 480 픽셀)
화질	: 2 모드 (FINE/STANDARD)
[8 MB]의 메모리 카드에 저장가능한 이미지 수량 (GR-DVL817에 한함)	
FINE	: 100
STANDARD	: 200
[16 MB]의 메모리 카드일 경우 (옵션)	
FINE	: 200
STANDARD	: 400
[32 MB]의 메모리 카드일 경우 (옵션)	
FINE	: 400
STANDARD	: 800
[64 MB]의 메모리 카드일 경우 (옵션)	
FINE	: 800
STANDARD	: 1600

연결기기

S-VIDEO

출력	: Y: 1 V (p-p), 75 Ω , 아날로그 C: 0.29 V (p-p), 75 Ω , 아날로그
----	---

AV

VIDEO 출력	: 1 V (p-p), 75 Ω , 아날로그
AUDIO 출력	: 300mV (rms), 1 k Ω , 아날로그, 스테레오

DV

출력	: 4-pin, IEEE 1394 compliant
입력	: 4-pin, IEEE 1394 compliant
USB (GR-DVL 817에 한함)	: 5-pin

PC (DIGITAL PHOTO)

(GR-DVL31 8에 한함)	: ϕ 2.5 mm, 3-pole
EDIT (GR-DVL81 7에 한함)	: ϕ 3.5 mm, 2-pole
JLIP (GR-DVL31 8에 한함)	: ϕ 3.5 mm, 4-pole

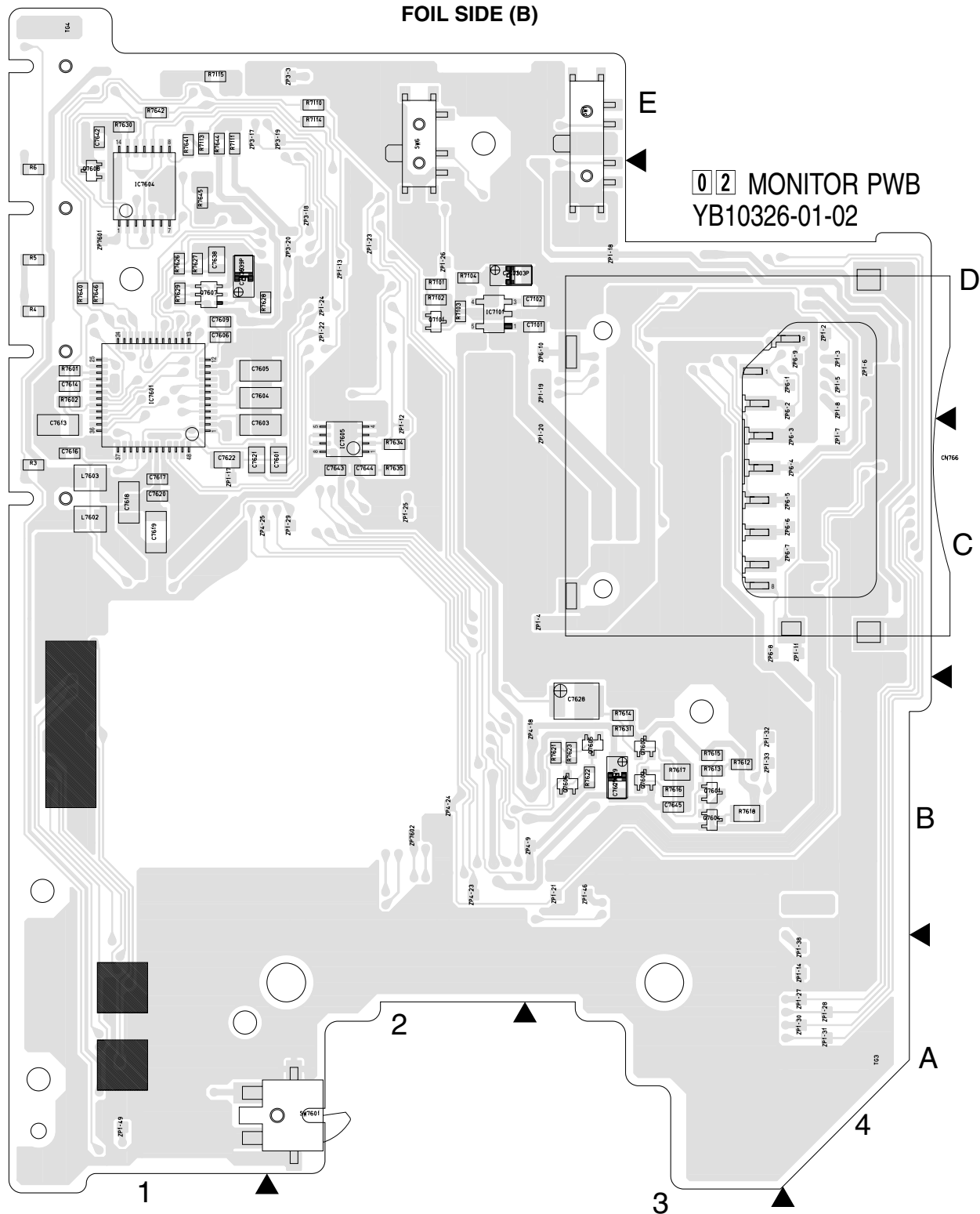
AC 전원 어댑터 AP-V10KR

전원	: AC 110 V to 220 V~, 60 Hz
출력	: DC 11 V $\overline{\text{---}}$, 1 A
크기 (W x H x D)	: 59 mm x 31 mm x 84 mm (2-3/8" x 1-1/4" x 3-5/16")
무게	: 약 140g (전원코드 불포함)

예시된 제품사양은 별도로 표시하지 않은한 SP모드일 경우입니다. E & O.E. 디자인과 제품 사양은 사전 통보없이 변경될 수 있습니다.

SECTION 4 CHARTS AND DIAGRAMS

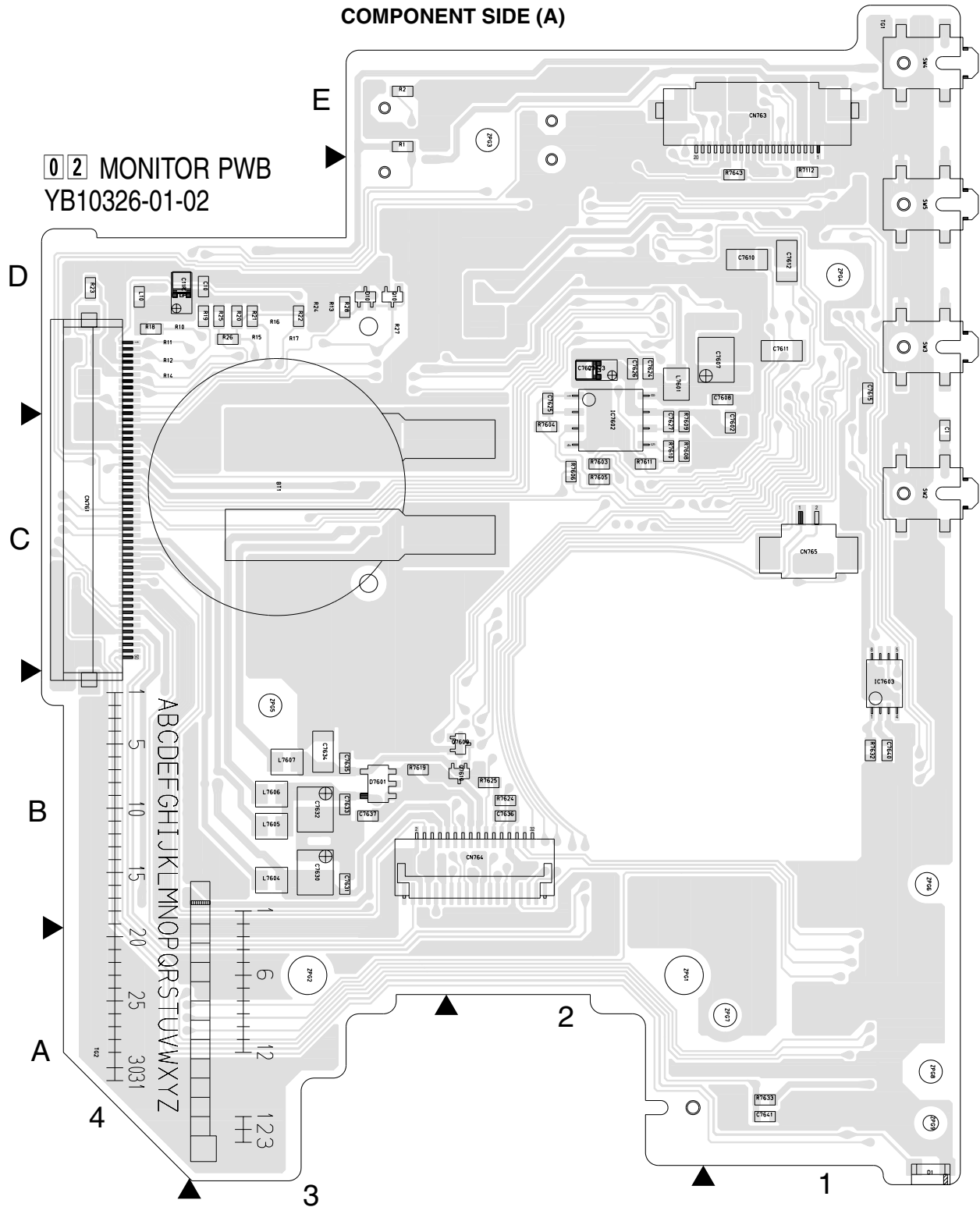
4.1 MONITOR CIRCUIT BOARD



COMPONENT PARTS LOCATION GUIDE <MONITOR/YB10326-01-02>

(1/2)

REF.NO.	LOCATION	REF.NO.	LOCATION	REF.NO.	LOCATION	REF.NO.	LOCATION	REF.NO.	LOCATION	REF.NO.	LOCATION	REF.NO.	LOCATION	REF.NO.	LOCATION		
CAPACITOR																	
C7608	A C 1D	C7609	A C 2D	C7622	B C 1C	C7636	A C 2B	CN764	A C 3B	IC7605	B C 2C	Q7601	B C 3B	R3	B C 1C		
C7610	A C 3D	C7611	A C 1D	C7624	A C 2D	C7638	B C 3B	CN765	A C 1C	COIL			Q7602	B C 3B	R4	B C 1D	
C7611	A C 4D	C7612	A C 1D	C7625	A C 2D	C7639	B C 1D	CN766	B C 4C	L10	A C 4D	Q7603	B C 3B	R5	B C 1D		
C7101	B C 3D	C7613	A C 1C	C7626	A C 2D	C7640	A C 1B	DIODE			L7601	A C 2D	Q7604	B C 3B	R6	B C 1D	
C7102	B C 3D	C7614	B C 1D	C7627	A C 2C	C7641	A C 1A	D1	A C 1A	L7602	B C 1C	Q7605	B C 3B	R7	B C 2E		
C7103	B C 2D	C7615	A C 1C	C7628	B C 3B	C7642	B C 1E	D10	A C 3D	L7603	B C 1C	Q7606	B C 3B	R8	A C 4D		
C7601	B C 2C	C7616	B C 1C	C7629	B C 3B	C7643	B C 2C	D7601	A C 3B	L7604	A C 3B	Q7607	B C 1D	R9	A C 3D		
C7602	A C 1C	C7617	B C 1C	C7630	A C 3B	C7644	B C 2C	IC			L7605	A C 3B	Q7608	B C 1D	R10	A C 3D	
C7603	B C 1C	C7618	B C 1C	C7631	A C 3B	C7645	B C 3B	IC7101	B C 2D	L7606	A C 3B	Q7609	A C 2B	R11	A C 3D		
C7604	B C 1D	C7619	B C 1C	C7632	A C 3B	CONNECTOR			IC7601	B C 1D	L7607	A C 3B	Q7610	A C 2B	R12	A C 3D	
C7605	B C 1D	C7620	B C 1C	C7633	A C 3B	CN761	A C 4D	IC7602	A C 2C	TRANSISTOR			RESISTOR			R25	A C 3D
C7606	B C 1D	C7621	B C 1C	C7634	A C 3B	CN763	A C 1E	IC7603	A C 1B	Q10	A C 3D	R1	A C 3E	R26	A C 3D		
C7607	A C 1D			C7635	A C 3B			IC7604	B C 1D	Q7101	B C 2D	R2	A C 3E	R28	A C 3D		
														R7101	B C 2D		
															R7102	B C 2D	
															R7103	B C 2D	
															R7104	B C 2E	
															R7110	B C 2D	
															R7111	B C 1E	
															R7112	A C 1D	
															R7113	B C 1E	
															R7114	B C 2E	
															R7115	B C 1E	
															R7601	B C 1D	
															R7602	B C 1D	
															R7603	A C 2C	
															R7604	A C 2C	
															R7605	A C 2C	



COMPONENT PARTS LOCATION GUIDE <MONITOR/YB10326-01-02>

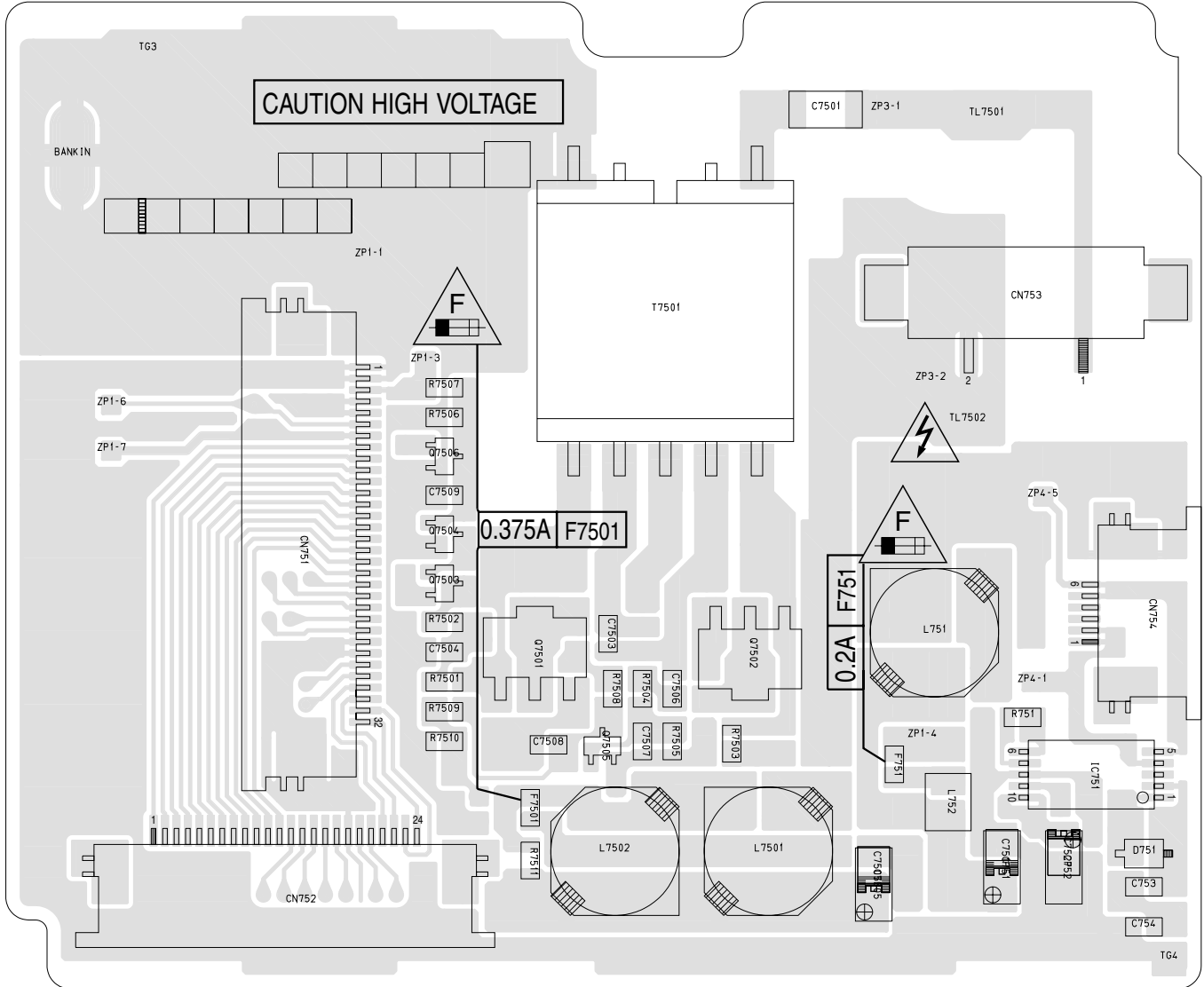
(2/2)

REF.NO.	LOCATION	REF.NO.	LOCATION	REF.NO.	LOCATION	REF.NO.	LOCATION	REF.NO.	LOCATION	REF.NO.	LOCATION	REF.NO.	LOCATION	REF.NO.	LOCATION
R7606	A C 2C	R7622	B C 3B	R7640	B C 1D	C7639P	B C 1D	ZP1-5	B C 4D	ZP6-9	B C 4D	ZP1-26	B C 2D	ZP3-20	B C 2D
R7608	A C 2C	R7623	B C 3B	R7641	B C 1E	SW1	B C 3E	ZP1-6	B C 4C	ZP1-11	B C 4C	ZP1-27	B C 4A	ZP4-18	B C 3B
R7609	A C 2C	R7624	A C 2B	R7642	B C 1E	SW2	A C 1C	ZP1-7	B C 4C	ZP1-12	B C 2C	ZP1-28	B C 4A	ZP4-23	B C 2B
R7610	A C 2C	R7625	A C 2B	R7643	A C 1D	SW3	A C 1D	ZP1-8	B C 4D	ZP1-13	B C 2D	ZP1-29	B C 2C	ZP4-24	B C 2B
R7611	A C 2C	R7626	B C 1D	R7644	B C 1E	SW4	A C 1E	ZP3-3	B C 2E	ZP1-14	B C 4A	ZP1-30	B C 4A	ZP4-25	B C 1C
R7612	B C 3B	R7627	B C 1D	R7645	B C 1D	SW5	A C 1D	ZP4-9	B C 3B	ZP1-17	B C 1C	ZP1-31	B C 4A	ZP6-10	B C 3D
R7613	B C 3B	R7628	B C 1D	R7646	B C 1D	SW6	B C 2E	ZP6-1	B C 4D	ZP1-18	B C 3D	ZP1-32	B C 3B	ZP7601	B C 1D
R7614	B C 3B	R7629	B C 1D				B C 2A	ZP6-2	B C 4D	ZP1-19	B C 3D	ZP1-33	B C 3B	ZP7602	B C 2B
R7615	B C 3B	R7630	B C 1E	OTHER			SW7601	A C 4C	ZP1-20	B C 3C	ZP1-38	B C 4A	ZP1-38	A	D 2A
R7616	B C 3B	R7631	A C 3B	BT1	A C 3C	TM3	A C 4E	ZP6-4	B C 4C	ZP1-21	B C 3B	ZP1-46	B C 3B	ZPG2	A D 3A
R7617	B C 3B	R7632	A C 1B	C11P	A C 4D	TM3	A C 4E	ZP6-5	B C 4C	ZP1-22	B C 2D	ZP1-49	B C 1A	ZPG3	A D 2E
R7618	B C 3B	R7633	A C 1A	C7103P	B C 2D	TM3	B C 4D	ZP6-6	B C 4C	ZP1-23	B C 2D	ZP3-17	B C 1E	ZPG4	A D 1D
R7619	A C 3B	R7634	B C 2C	C7623P	A C 2D	ZP1-2	B C 4D	ZP6-7	B C 4C	ZP1-24	B C 2D	ZP3-18	B C 2D	ZPG5	A D 3B
R7621	A C 3B	R7635	B C 2C	C7629P	B C 3B	ZP1-4	B C 3C	ZP6-8	B C 3C	ZP1-25	B C 2C	ZP3-19	B C 2E	ZPG6	A D 1B

4.2 LCD BL CIRCUIT BOARD

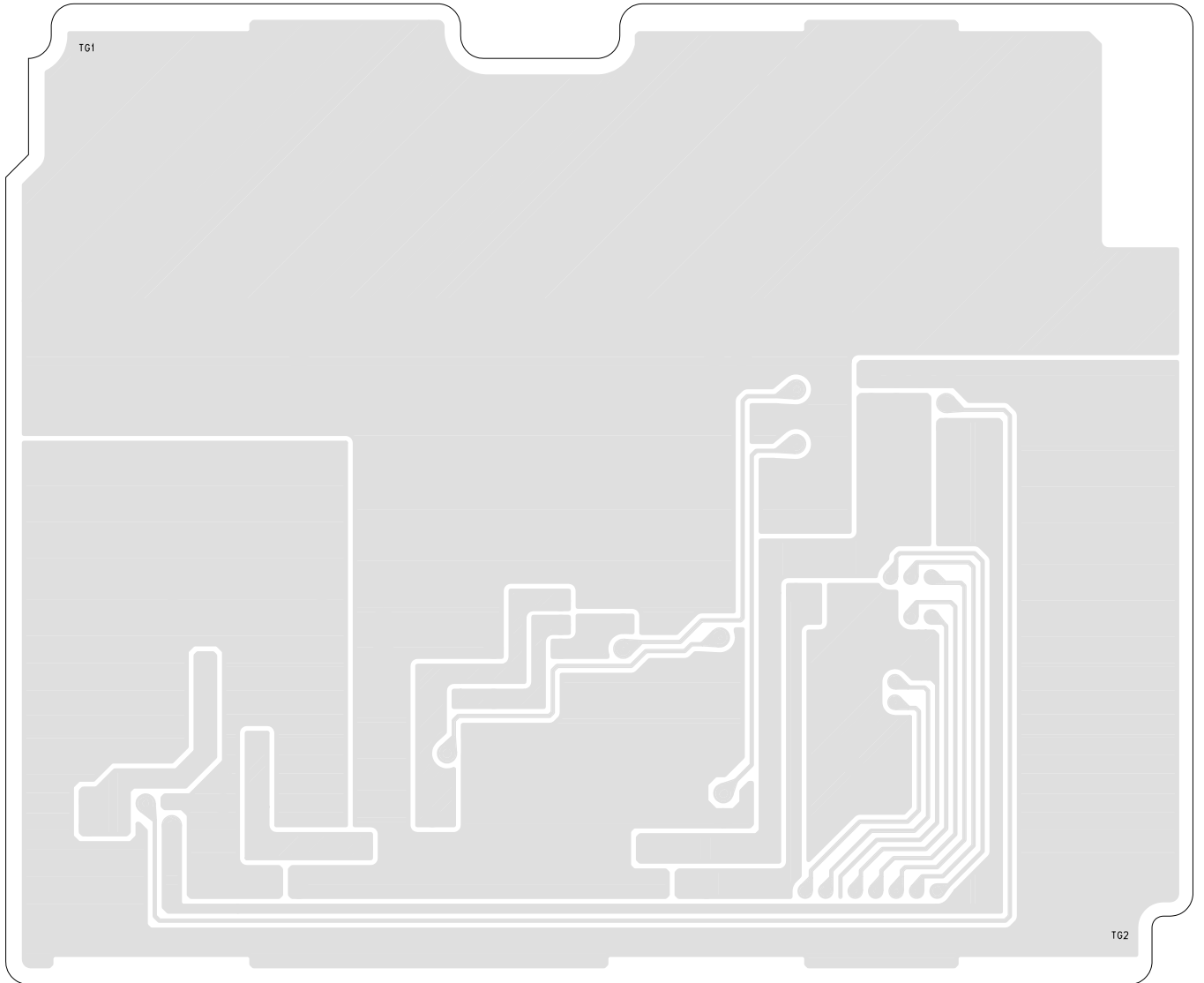
FOIL SIDE (B)

03 LCD BL PWB
YB10325-01-03



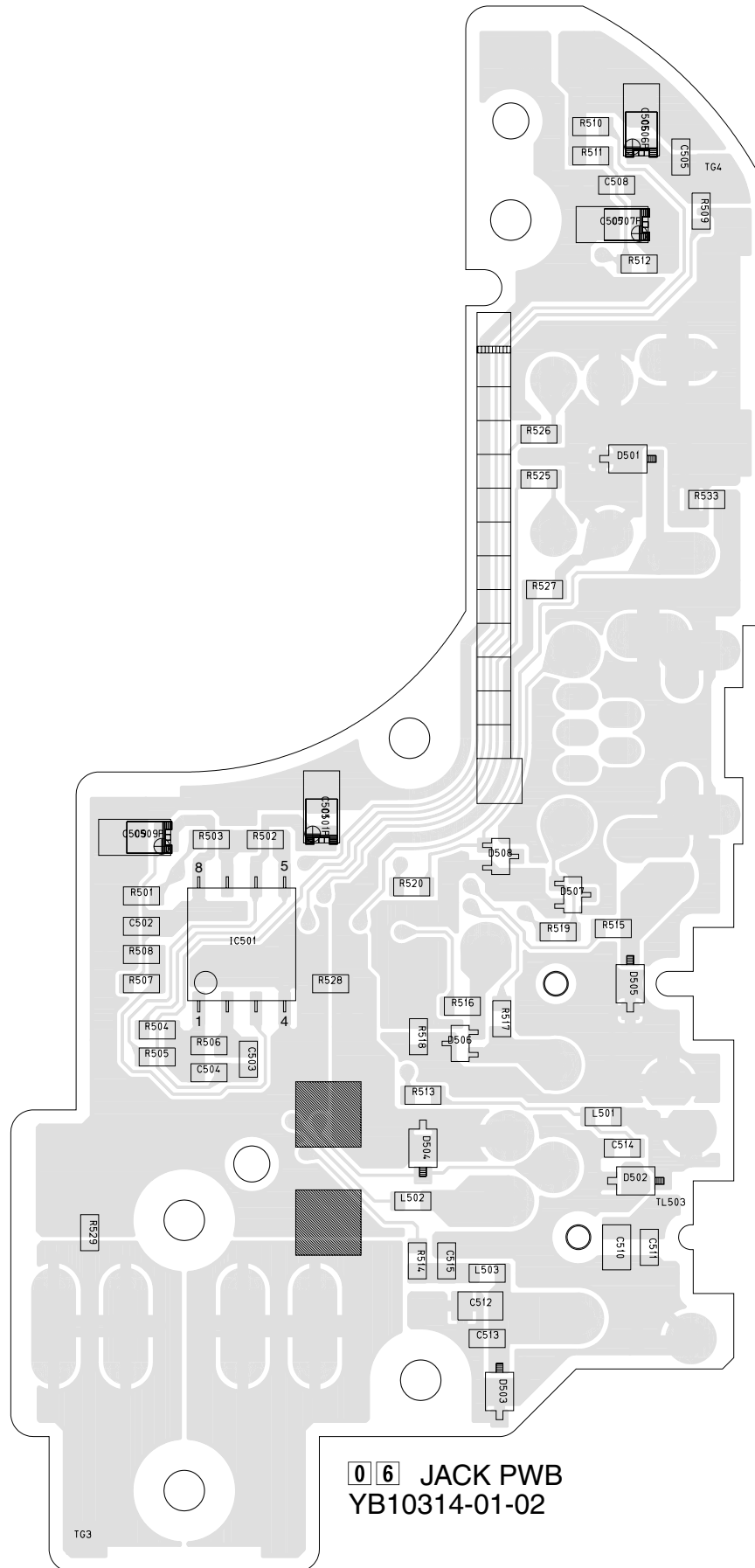
COMPONENT SIDE (A)

03 LCD BL PWB
YB10325-01-03

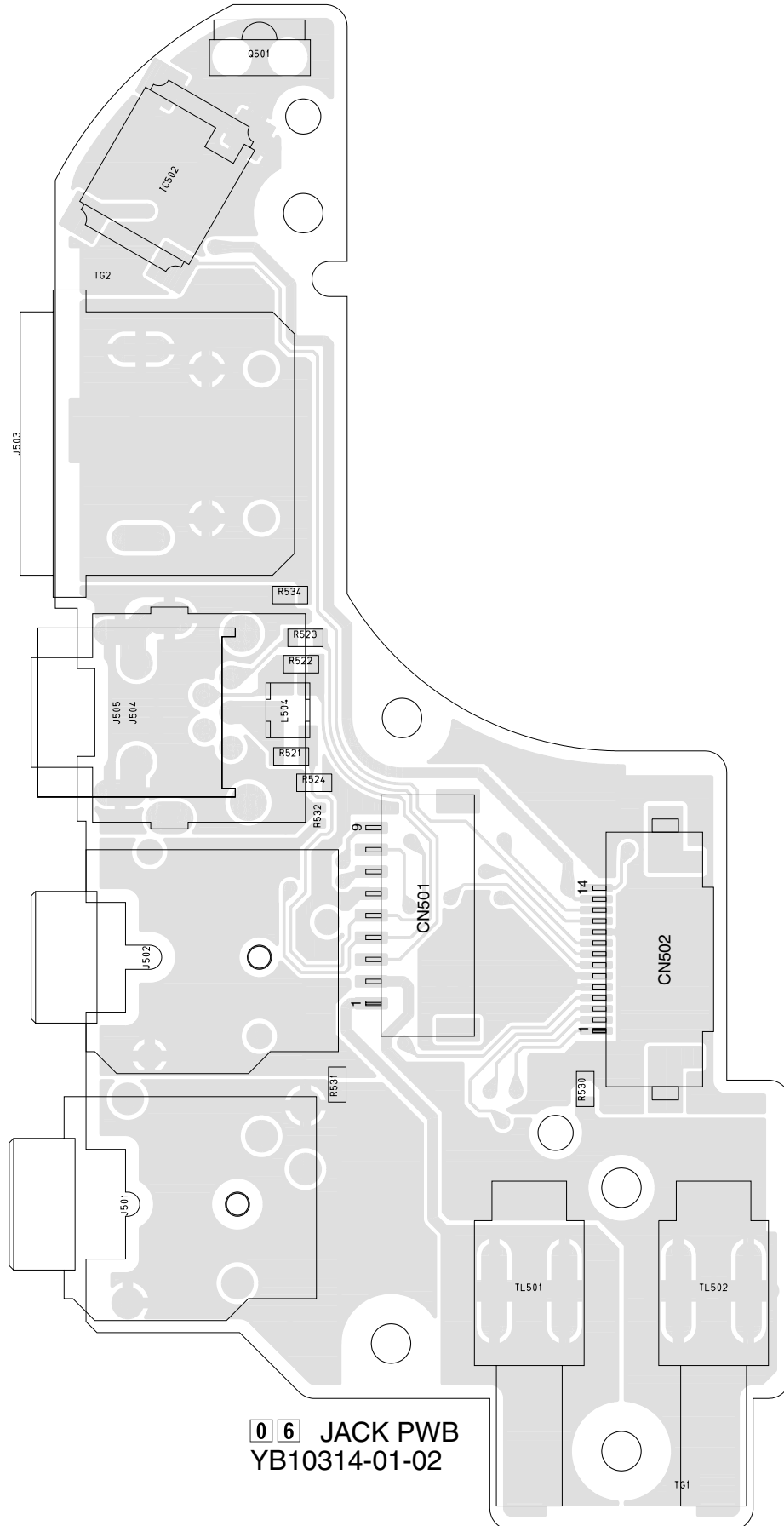


4.3 JACK CIRCUIT BOARD

FOIL SIDE(B)



COMPONENT SIDE(A)

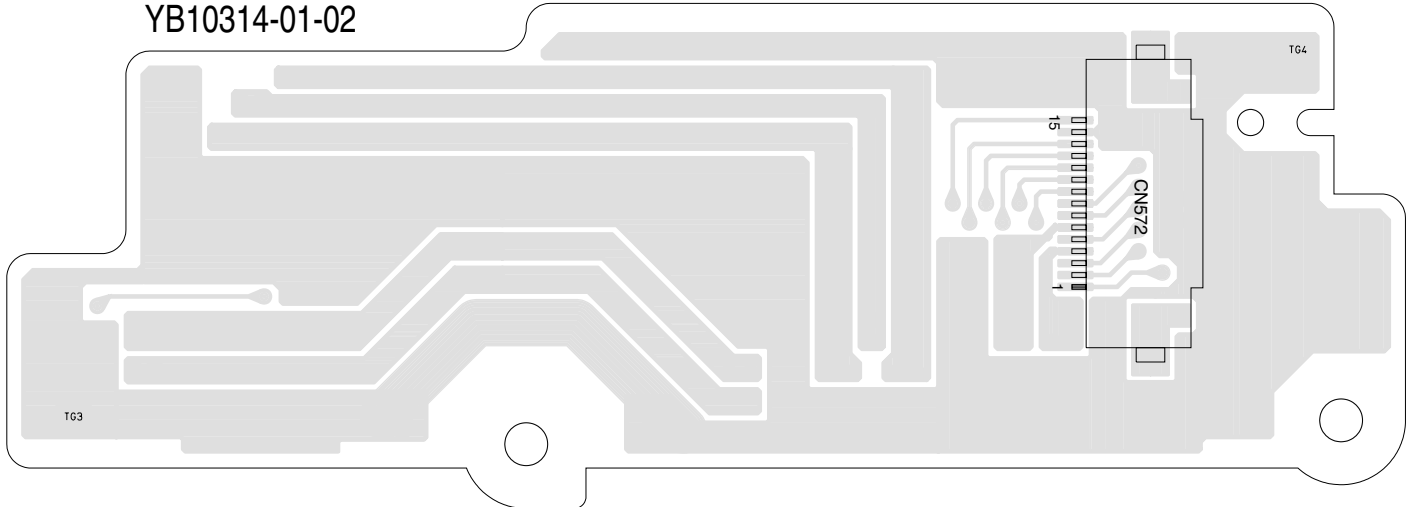


**06 JACK PWB
YB10314-01-02**

4.4 JUNCTION CIRCUIT BOARD

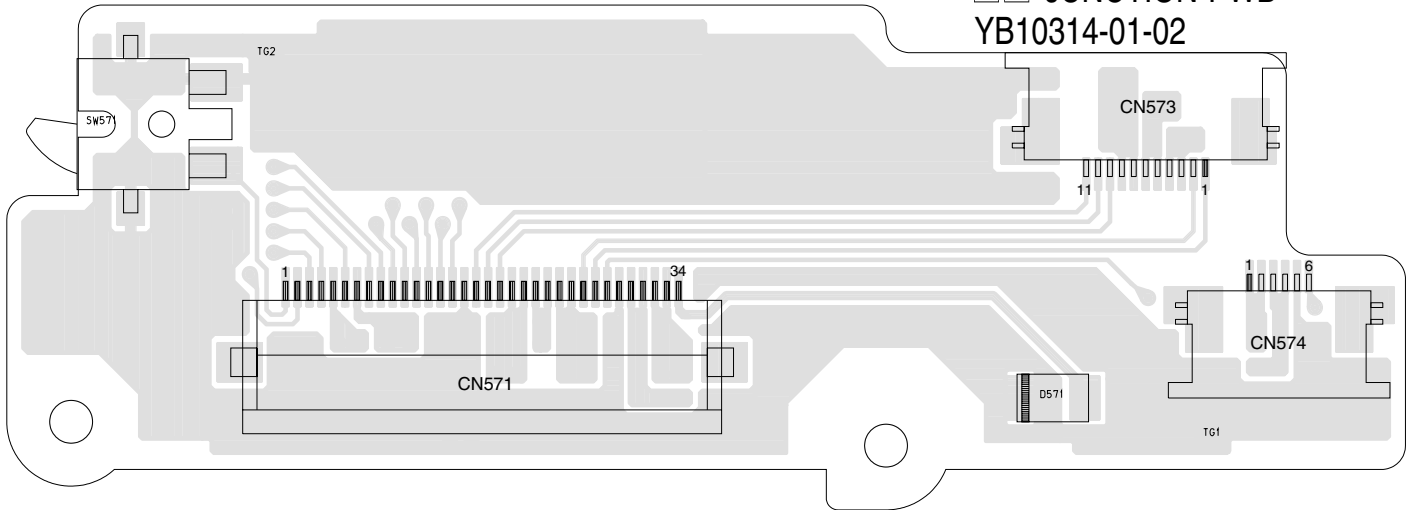
05 JUNCTION PWB
YB10314-01-02

FOIL SIDE(B)



COMPONENT SIDE(A)

05 JUNCTION PWB
YB10314-01-02





JVC

VICTOR COMPANY OF JAPAN, LIMITED
VIDEO DIVISION

S40894